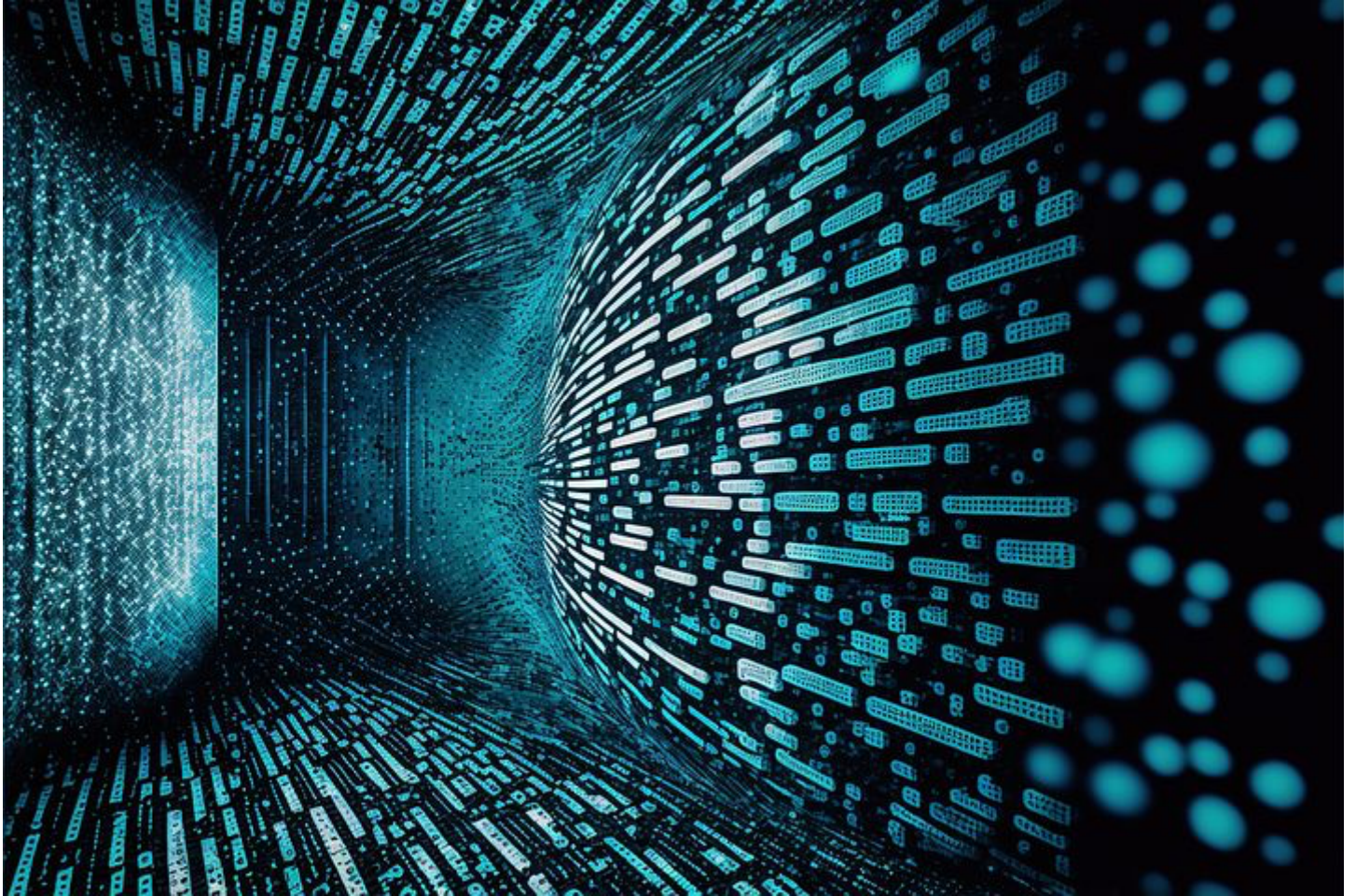




données et algc  
pour une ville intelliger.

# TEAMS

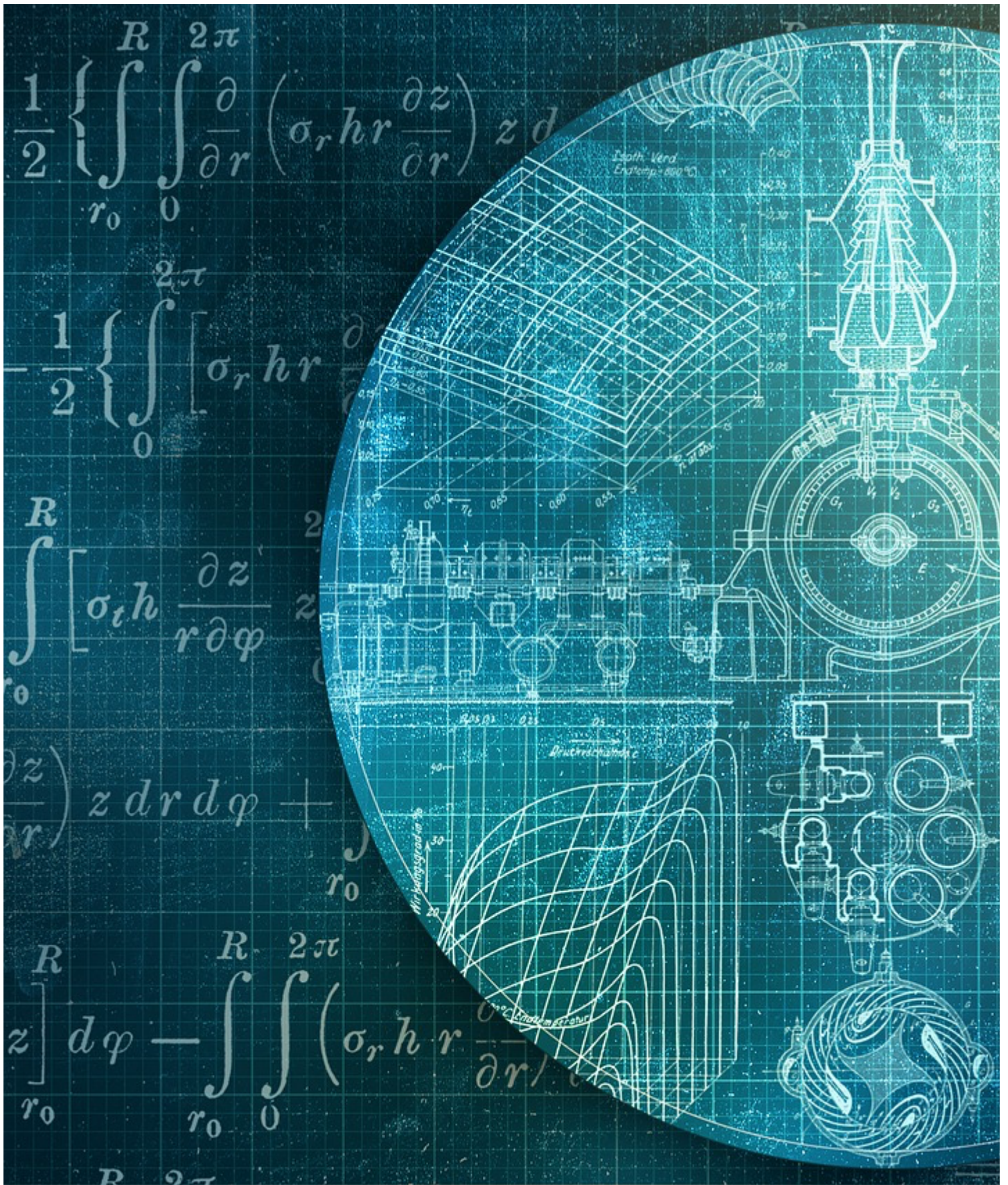


## ADAM

---

The ADAM team (Ambient Data Access and Mining), whose expertise lies in the modeling of heterogeneous data, the integration and semantic fusion of this data, and the extraction of knowledge using complex queries and mining techniques.

[Read more](#)

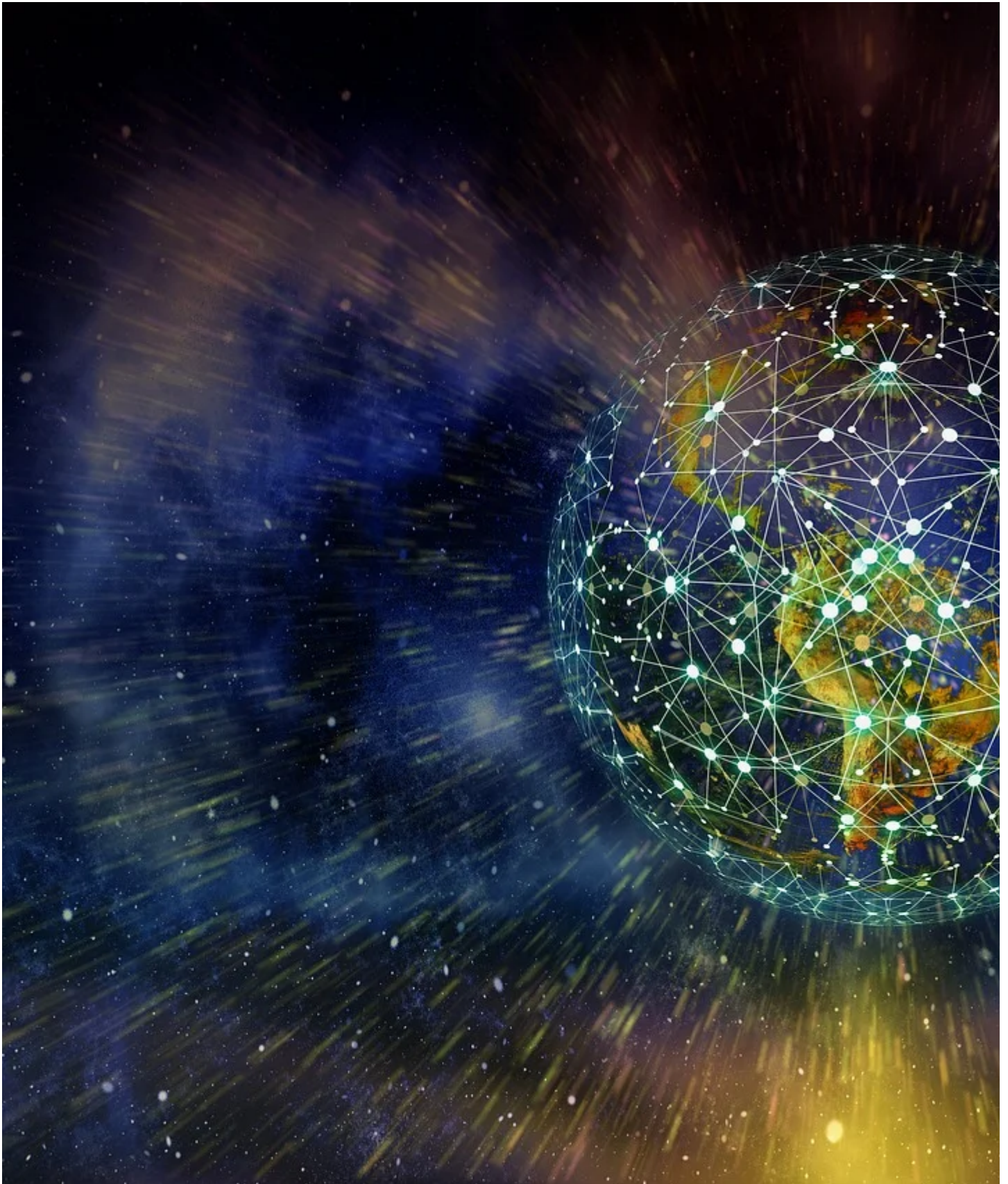


## ALMOST

The ALMOST team (**A**lgorithms and **S**tochastic **M**odels), whose expertise concerns

modeling, algorithmic resolution and performance evaluation, in various fields of application (smart cities, telecommunications, molecular analysis)

[Read more](#)



The NGN team (**Next Generation Networks**), whose expertise concerns mobility management, connectivity, resource allocation in new generation 5G mobile networks and beyond. Keywords: 5G, IoT, virtualization...

[Read more](#)



## PETRUS

---

The PETRUS team (**Personal and Trusted Cloud**), whose expertise concerns personal data management structures and algorithms and their security, data management based on secure hardware, sharing models, and the integration of all of these techniques into

architectures Privacy-by-Design allowing the individual to manage his digital heritage under control.

[Read more](#)